

## How to Update System Firmware of FlexWATCH™ Server

This technical note is to guide how to update system firmware of FlexWATCH™ server.

### ● Before Update,

You can download the latest version from “Support - Downloads” menu on <http://www.flexwatch.com>

### ● To Download firmware

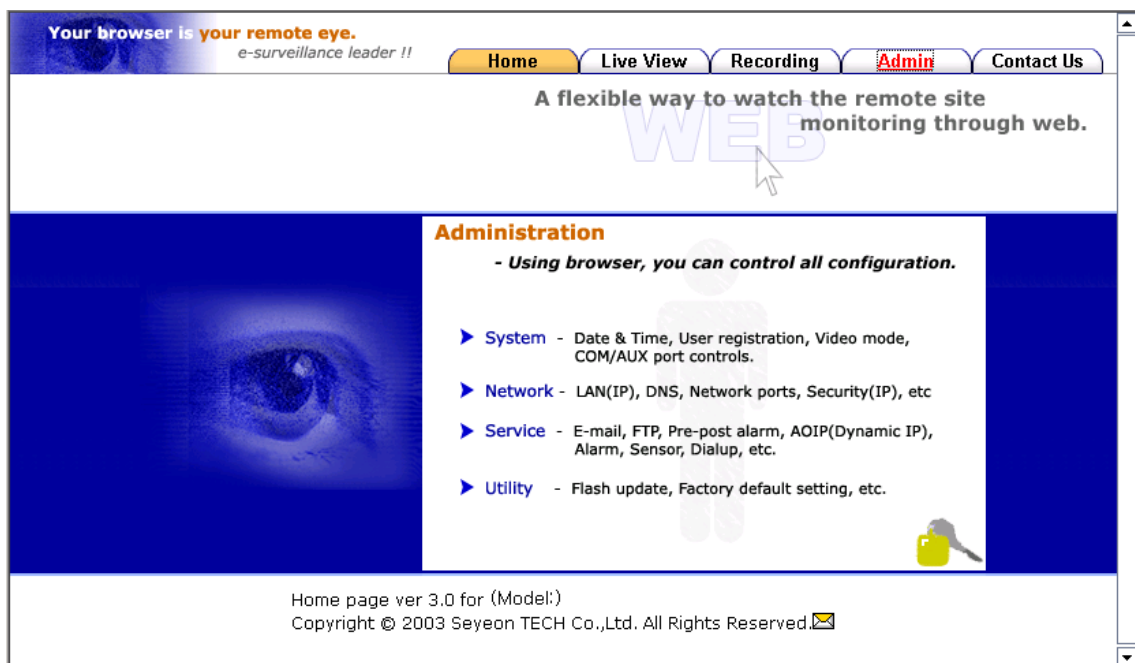
- Access the web site <http://www.flexwatch.com>, and download firmware files
- or Request your local dealer the recent the latest firmware files
- or Request the recent files to Seyeon Tech Co., Ltd.(sales@flexwatch.com) via e-mail, fax, etc.

### ● Upgrade Procedure.

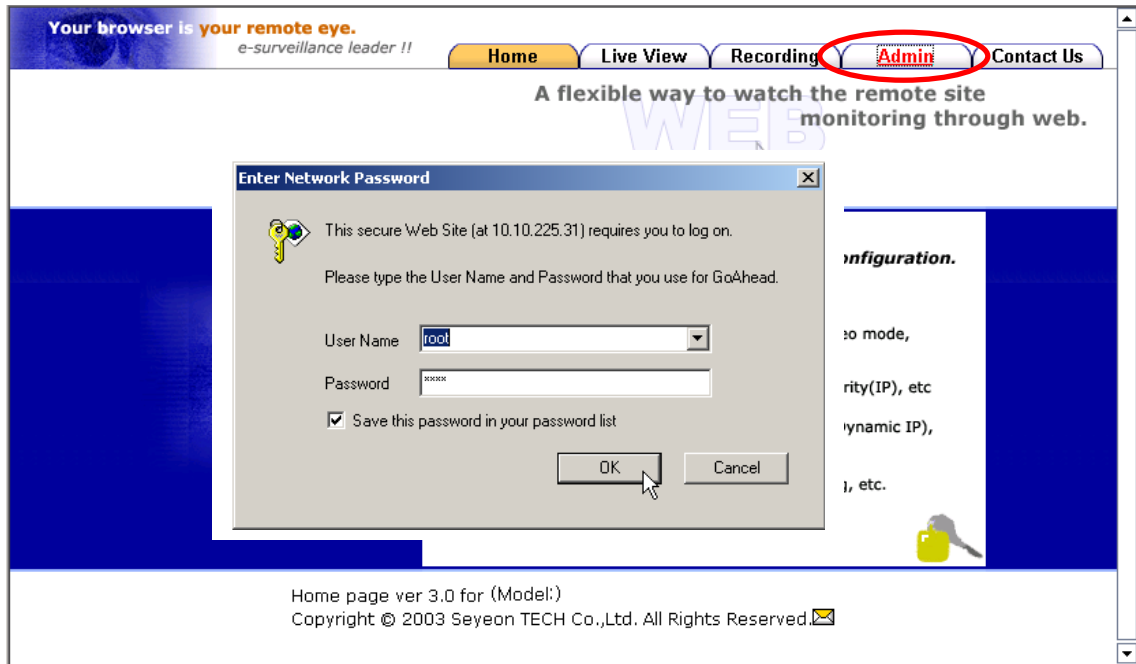
#### WARNING !!!

**- During upgrading FlexWATCH, do not access FlexWATCH to see pictures. It may result in unpredictable behavior.**

1. If you connect FlexWATCH™ Server through Web browser, the start page will be appeared as below. Then click ‘Admin’ menu.



2. Click ‘Admin’, and following window will show up to check admin IP and Password.



- After checking admin ID/Password, Admin Menu will come up as below. Click 'Utilities > System Update' on the left frame.

<ul style="list-style-type: none"> <li><b>System Configuration</b></li> <li>» System Information</li> <li>» Date &amp; Time</li> <li>» Admin. Password</li> <li>» Access Control</li> <li>» User Registration</li> <li>▣ Tx Module Registration</li> <li><b>Network Configuration</b></li> <li>» Network Configuration</li> <li>» PPPoE Configuration</li> <li>» Network Ports</li> <li>» WAN(PPP,Modem)</li> <li>» Service Path</li> <li>» View Network Status</li> <li>» Network Status Notify</li> <li>» AOIP™ Setup</li> <li>» NTP Setup</li> <li><b>Device Configuration</b></li> <li>▣ Serial Ports</li> <li>▣ Camera &amp; Motion</li> <li>» Input/Output Name</li> <li>» Alarm Output Control</li> <li><b>Advanced Configuration</b></li> <li>▣ Advanced Services</li> <li><b>Utilities</b></li> <li>» Save Configuration</li> <li>» Reboot</li> <li>» Factory Default</li> <li>» <b>System Update</b></li> </ul>	<table border="1"> <thead> <tr> <th colspan="2">System Configuration</th> </tr> </thead> <tbody> <tr> <td colspan="2"><b>This category shows the detailed method for System configuration.</b></td> </tr> <tr> <td>» System Information</td> <td>Configuration of FlexWATCH™ server's name.</td> </tr> <tr> <td>» Date &amp; Time</td> <td>Configuration of FlexWATCH™ server's Date &amp; Time.</td> </tr> <tr> <td>» Admin. Password</td> <td>Change administrator's password.</td> </tr> <tr> <td>» Access Control</td> <td>Configuration to permit the access according to user level.</td> </tr> <tr> <td>» User Registration</td> <td>Add, Edit, Delete User ID &amp; Password.</td> </tr> <tr> <td>» Tx Module Registration</td> <td>Tx Module Registration.</td> </tr> </tbody> </table>	System Configuration		<b>This category shows the detailed method for System configuration.</b>		» System Information	Configuration of FlexWATCH™ server's name.	» Date & Time	Configuration of FlexWATCH™ server's Date & Time.	» Admin. Password	Change administrator's password.	» Access Control	Configuration to permit the access according to user level.	» User Registration	Add, Edit, Delete User ID & Password.	» Tx Module Registration	Tx Module Registration.
System Configuration																	
<b>This category shows the detailed method for System configuration.</b>																	
» System Information	Configuration of FlexWATCH™ server's name.																
» Date & Time	Configuration of FlexWATCH™ server's Date & Time.																
» Admin. Password	Change administrator's password.																
» Access Control	Configuration to permit the access according to user level.																
» User Registration	Add, Edit, Delete User ID & Password.																
» Tx Module Registration	Tx Module Registration.																

4. Following window will show up

**System Update**

All (Firmware, RAM disk, System, Web) Update	<input type="button" value="Start"/>
System and Web Update	<input type="button" value="Start"/>
Web Only Update	<input type="button" value="Start"/>
PTZ Device Driver Update	<input type="button" value="Start"/>
Sensor Device Driver Update	<input type="button" value="Start"/>

System Information	
Web	Version 3.0 (Build:2005/05/25)
Firmware	Version 3.0 (Build:2005/05/25 )
Serial Number	00:30:6F:83:02:03

**All (kernel, RAM disk, System, Web) Update:** Update for Kernel, RAM Disk, System and Web.

**System and Web Update:** Update for System and Web.

**Web Only Update:** Update only for Web

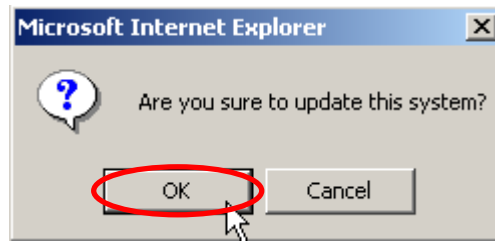
5. All (Kernel, RAM disk, System, Web) Update

**A.** If you click “Start” button for update All ( Kernel, RAM disk, System, Web ), confirmation window will show up. Click “Yes” to get update or “Cancel” to stop it.

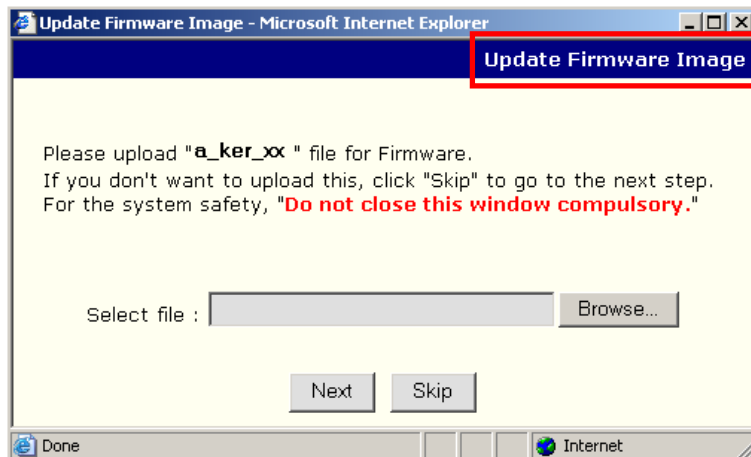
**System Update**

All (Firmware, RAM disk, System, Web) Update	<input type="button" value="Start"/>
System and Web Update	<input type="button" value="Start"/>
Web Only Update	<input type="button" value="Start"/>
PTZ Device Driver Update	<input type="button" value="Start"/>
Sensor Device Driver Update	<input type="button" value="Start"/>

System Information	
Web	Version 3.0 (Build:2005/05/25)
Firmware	Version 3.0 (Build:2005/05/25 )
Serial Number	00:30:6F:83:02:03



**B.** First, a window for searching Kernel Image will show up and the current update process will be appeared at the top of right corner.

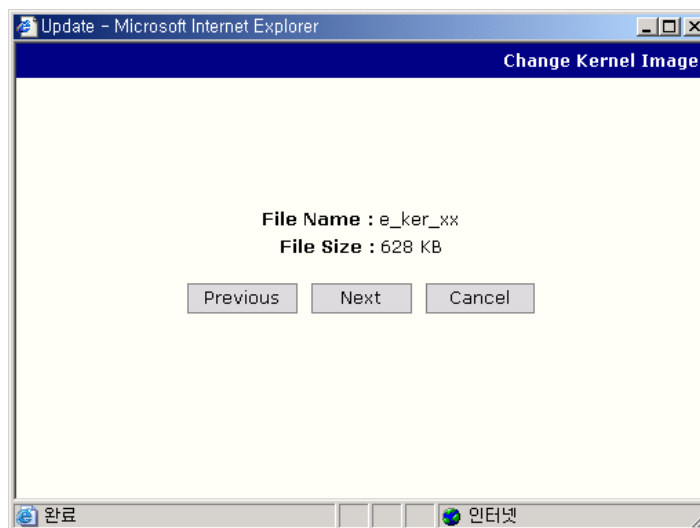


*If Pop-up Interpreter is installed in your PC, the above window may not show up. When you do system update on Web page, make sure to stop running Pop-up Interpreter before updating.*

**C.** Click “Browse” button, and then select the latest version of Kernel Image file.

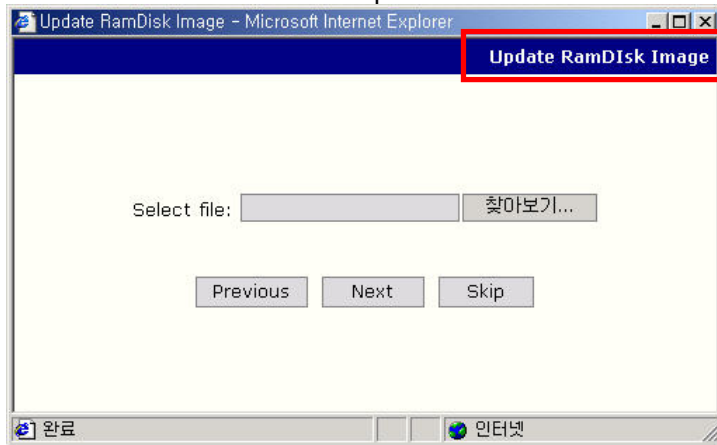
**D.** Click “Next” button. If you click “Skip” button, you can move to the next step without Update for Kernel Image.

**E.** If you click “Next” button, file name and size will be appeared on the window as below.



**F.** Click “Next” to get update for this program, or click “Cancel” to stop Update process. If you click “Previous” button, you will get back to **B** step.

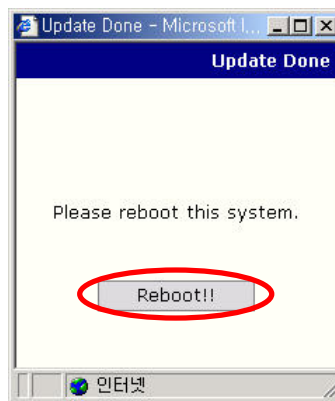
G. The next step is to search a file for RAM Disk Update.



H. The other steps hereafter are same as the process from C to F.

I. Update for System Image and Web page is also same as the process from C to F.

J. After all Update process, a window for Rebooting will be show up. Click "Reboot" button.



**\* Firmware files for each model (LinuxO/S-based products)**

**FW3440B, FW5440B, Fw5000B :** e\_ker\_xx  
e\_rfs\_xx.gz  
e\_sys\_xx.tar.gz  
e\_web\_xx.tar.gz

**FW3440A, FW5440A, FW5000A :** a\_ker\_xx  
a\_rfs\_x4.gz  
a\_sys\_x4.tar.gz  
a\_web\_xx.tar.gz

**FW1160 series, FW3110, FW1110 :** a\_ker\_xx  
a\_rfs\_x1.gz  
a\_sys\_x1.tar.gz  
a\_web\_xx.tar.gz

**FW1110W :** a\_ker\_xx  
a\_rfs\_x1.gz  
a\_sys\_xW.tar.gz  
a\_web\_xx.tar.gz

**FW1110L :** a\_ker\_xx  
a\_rfs\_x1.gz  
a\_sys\_xL.tar.gz  
a\_web\_xx.tar.gz

**FW1110LW :** a\_ker\_xx  
a\_rfs\_x1.gz  
a\_sys\_LW.tar.gz  
a\_web\_xx.tar.gz